

DG40XXHC Series DVR board Driver Installation Manual

Installation steps (Normally)

Before you run DVR program, you must install correct drivers for DVR boards at first.

First, Double-click the driver installation program “DriverInstall.exe”, a dialog will display.

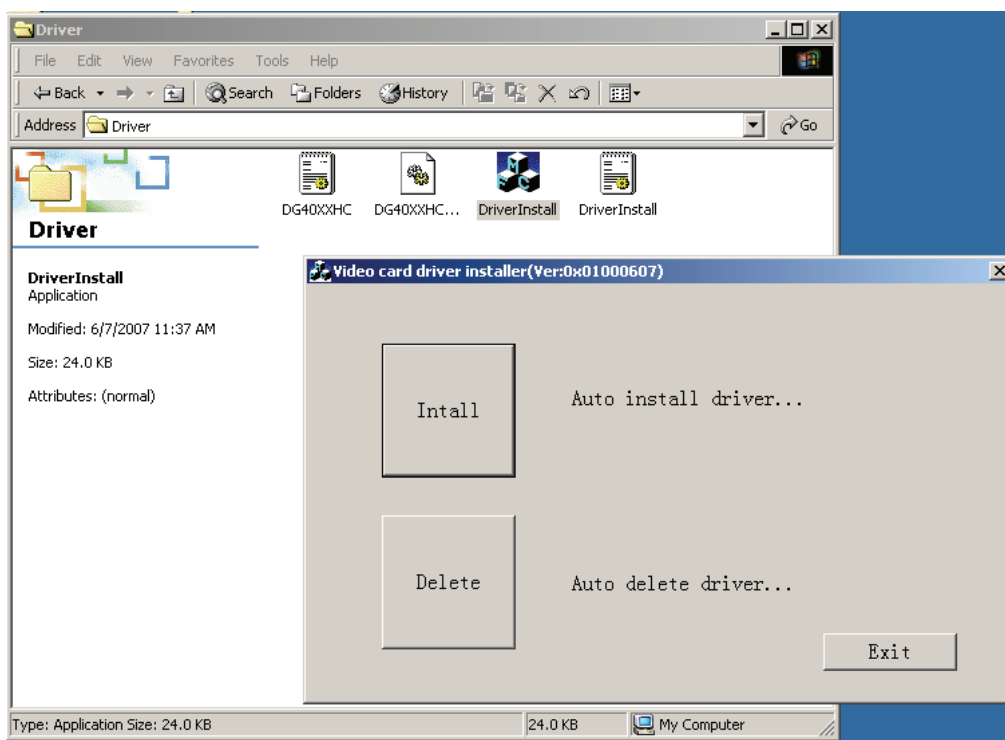


Figure 1: Double-Click “DriverInstall.exe”

Click “Install” to install drivers. When it informs that all drivers have been installed successfully, you can click “OK” button to exit the program.

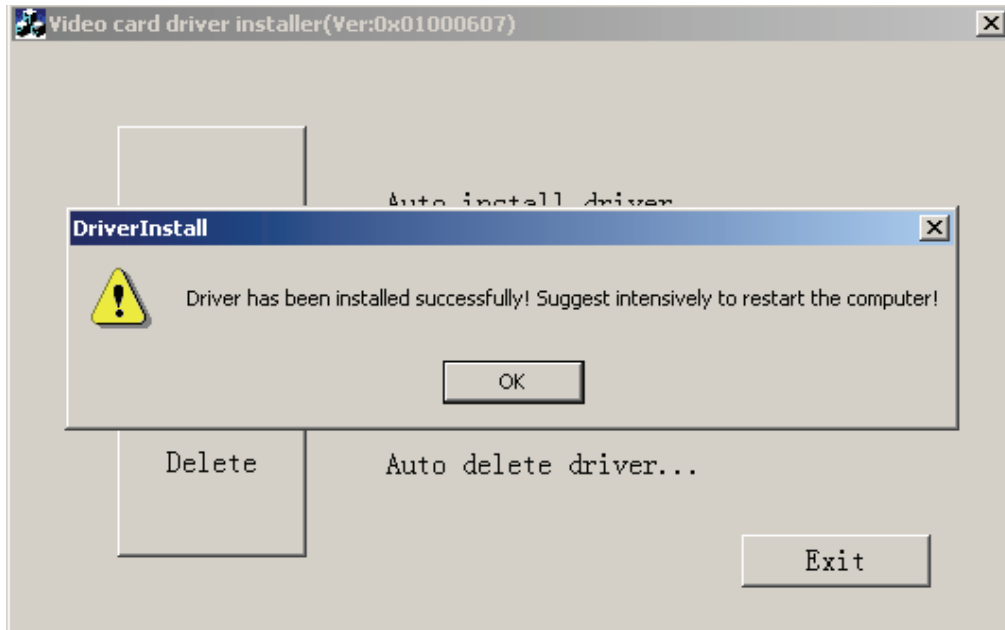


Figure 2: Finish installation

After the Drivers has been installed. When we open the Device Manager, we will see the following window. "H.264 DVR CARD" sign Driver has been installed successfully. Each board DSP chipset will own one driver here.

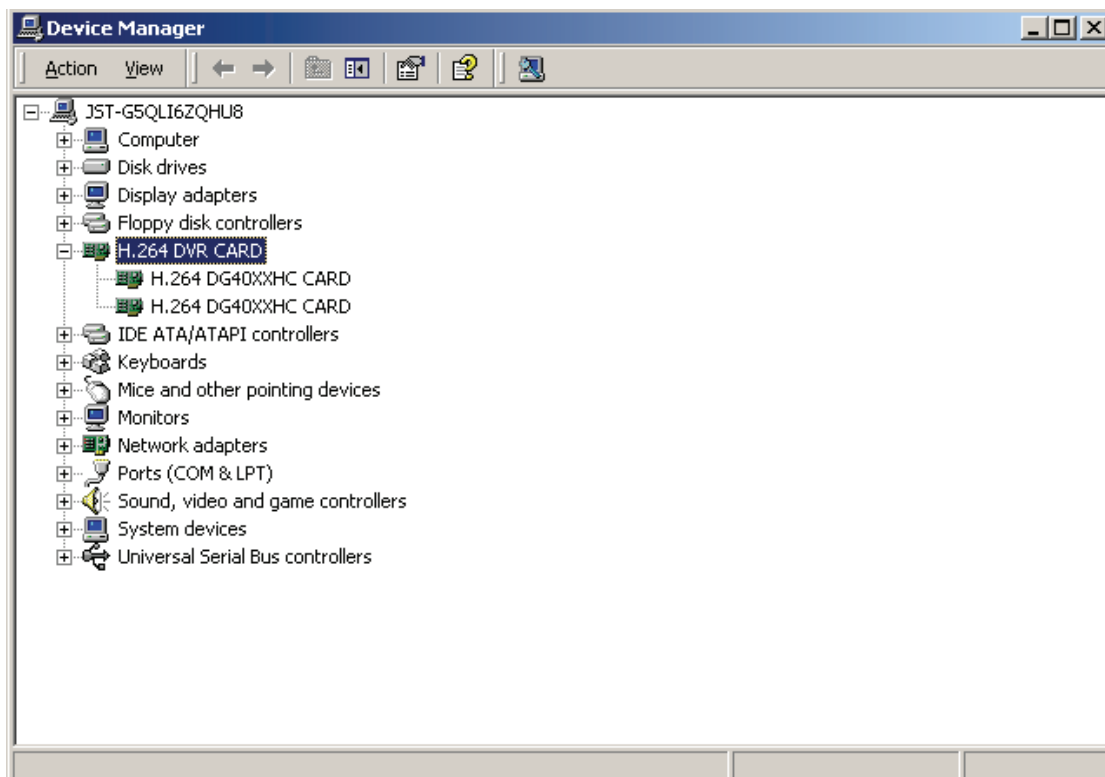


Figure 3: Check drivers had been installed

Attention:

If our PC has installed DS series board (Hikvision series board) before you install DG40XXHC series board, maybe windows will install its drivers as DS series board. So you must reinstall DG40XXHC series board as following steps:

First, Single-Right-Click “My computer” and choose “Properties”. In the window click “Hardware”, and then Single-Left-Click “Device Manager”. We will find the “DS 40xxHC Series”, which signs our board has installed as DS series board.

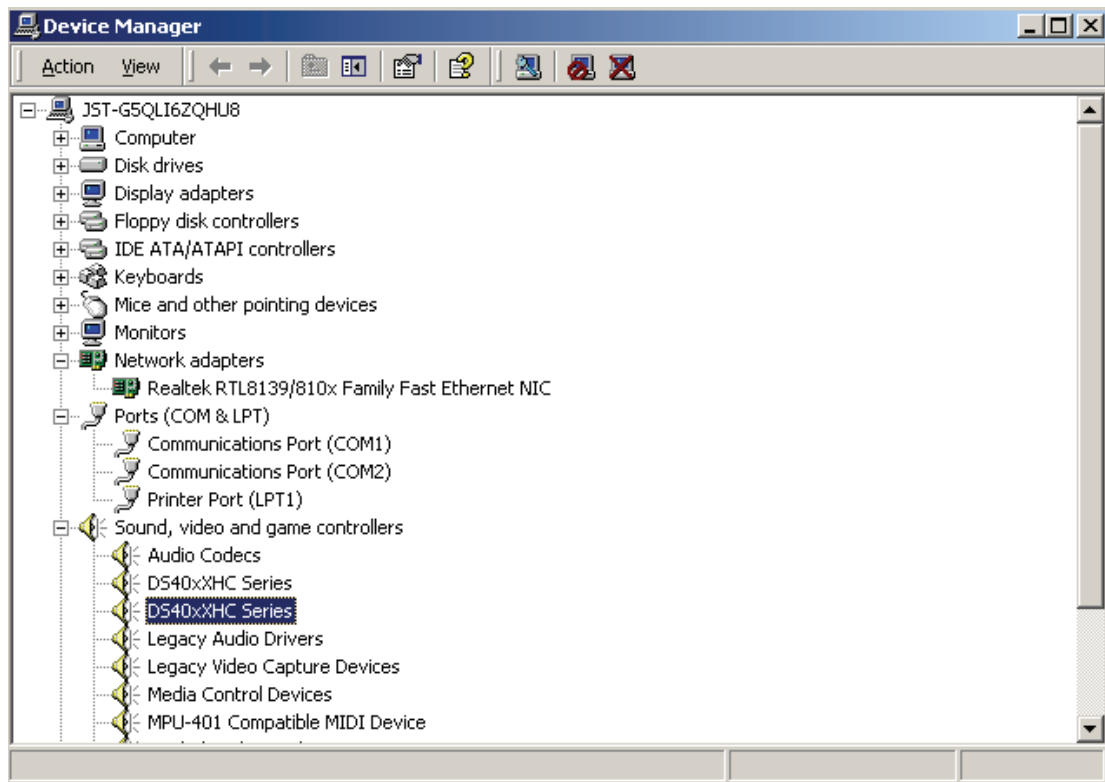


Figure 4 Check drivers

Then you should Single-Right-Click “DS 40xxHC Series” and choose “Properties”

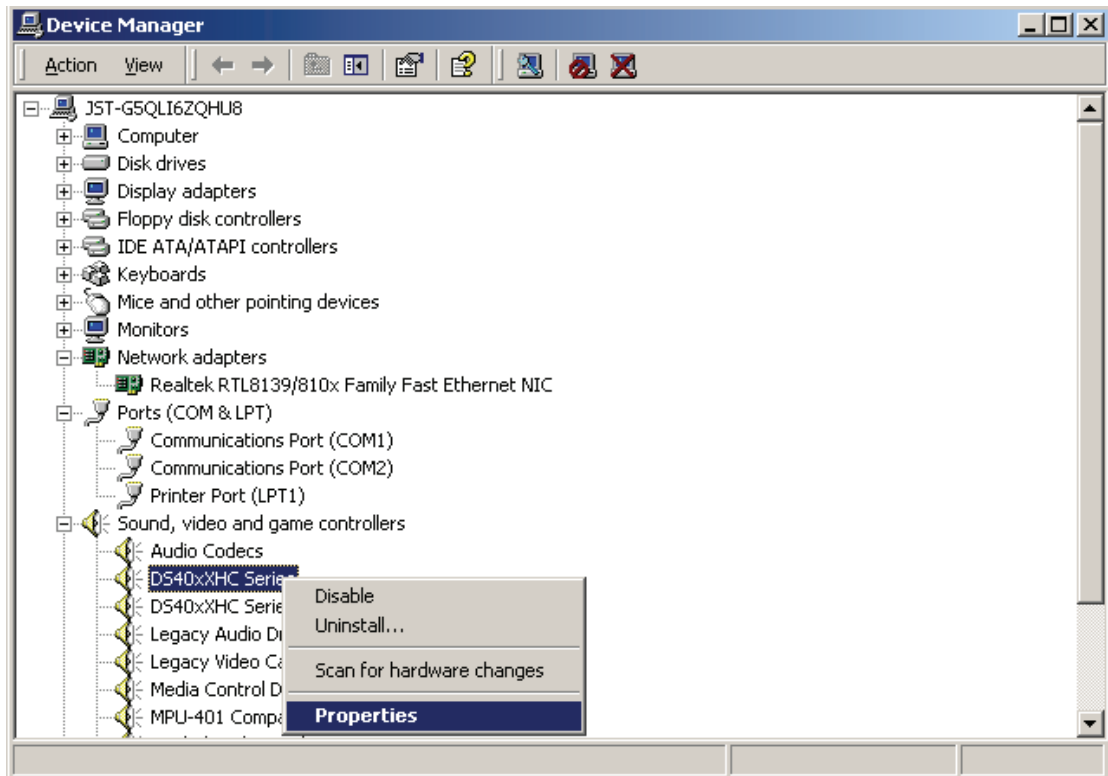


Figure 5: Check properties of DS series driver

The figure 6 will be showed. Now in this window we click the “Driver” and choose the option “Update Driver”

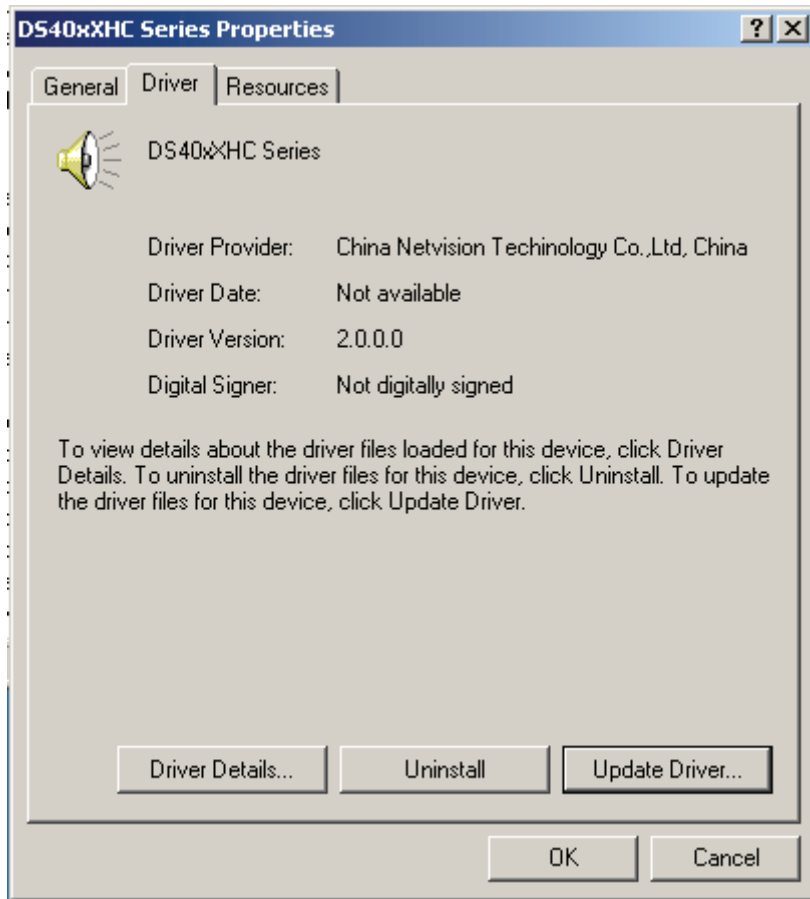


Figure 6: Select update driver

After the above operations the dialog Figure 7 will display. Figure 7 enable us to choose a specific driver. You can choose the second option and click "Next" button

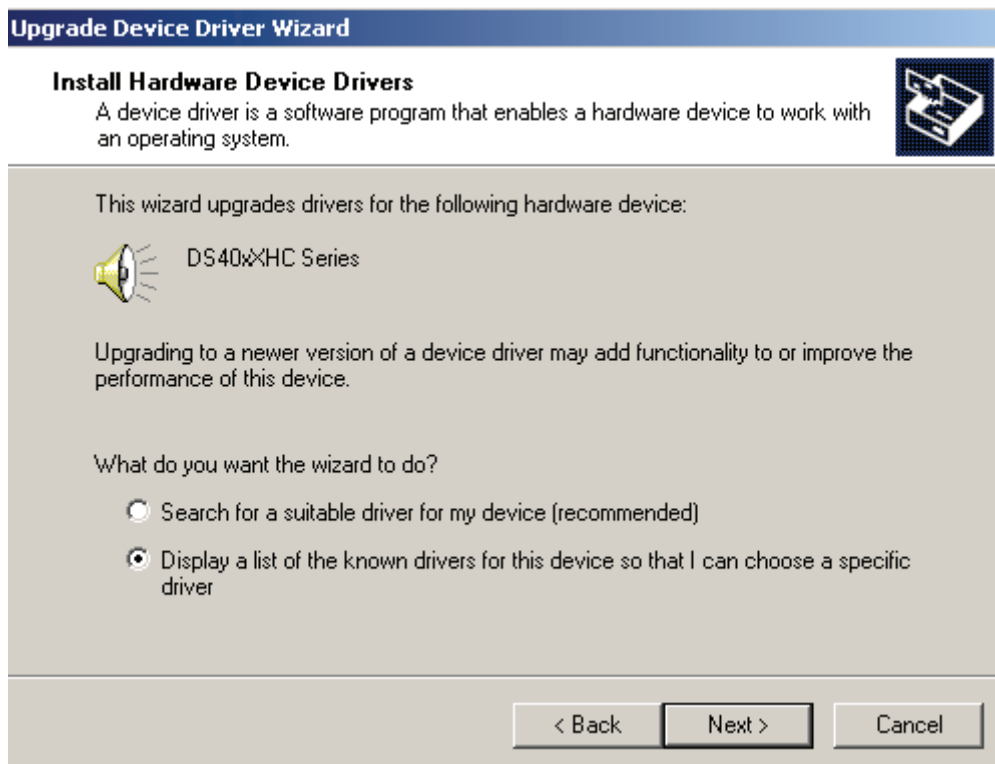


Figure 7: To choose a specific driver

We will find available drivers for this device. If the correct driver (DG40XXHC) is not included in this list, we should search the compatible hardware manually.

By clicking the “Show compatible hardware” option and “Have Disk...” button, you can select the correct driver file in local disk and install it. The figures 8,9 and10 show the operation steps:

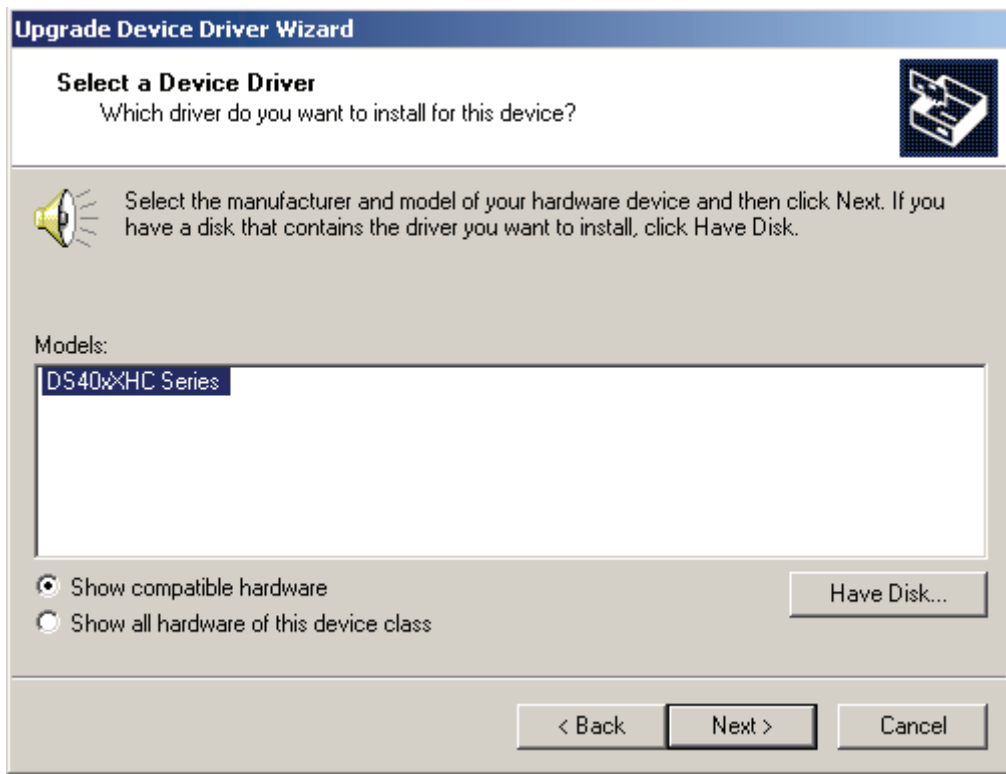


Figure 8: To select correct driver file

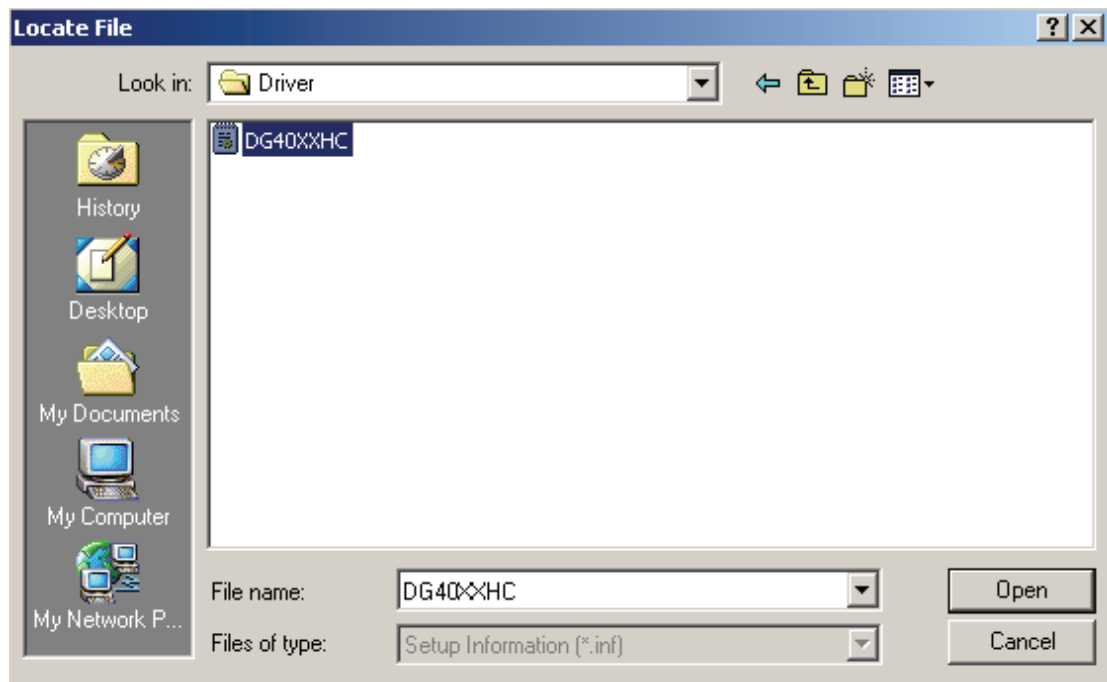


Figure 9: Select correct driver file

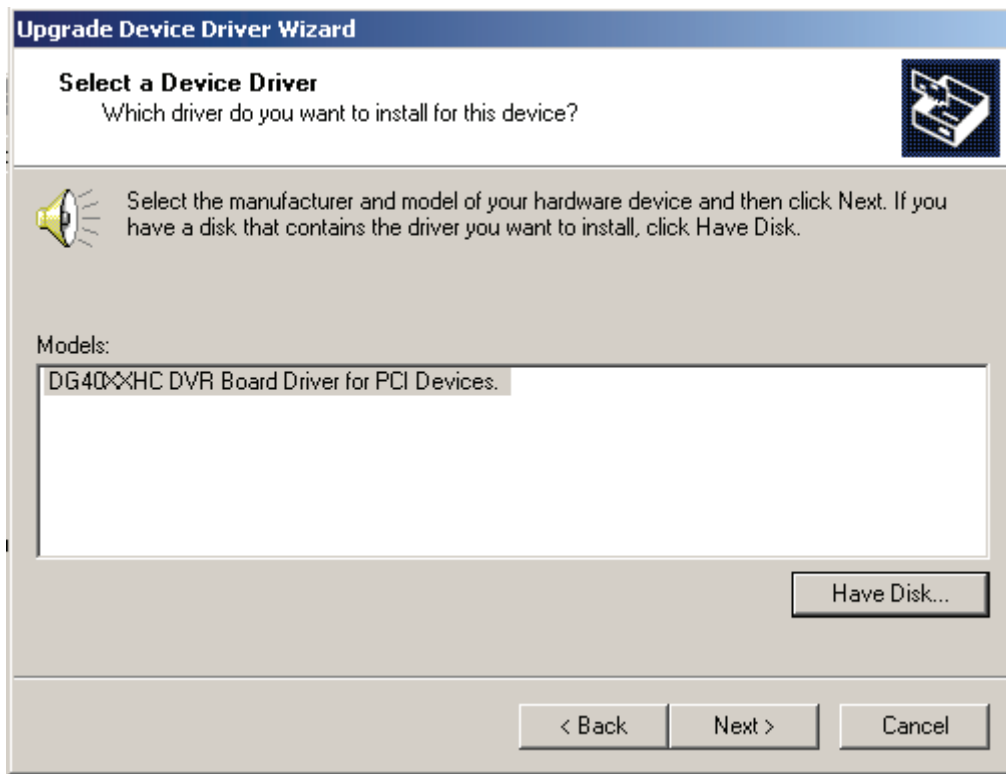


Figure 10: Add correct driver file

When all above operations are completed, the “DG 40xxHC DVR Board Driver for PCI Devices” will be added to the device driver list. Then you can choose the “DG 40xxHC.....” and click “Next” button to install this driver.

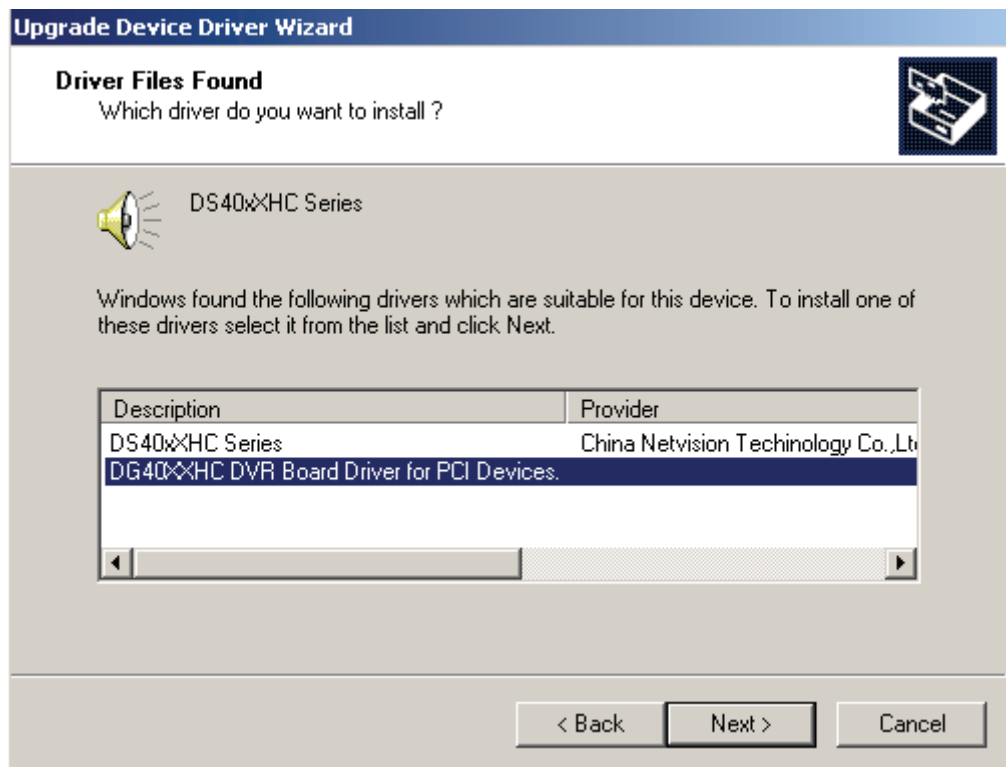


Figure 11: Install correct driver

After our board driver has been installed correctly. You can open the device manager to check the driver; we will see the following window. The H.264 DVR CARD sign driver has been installed successfully.

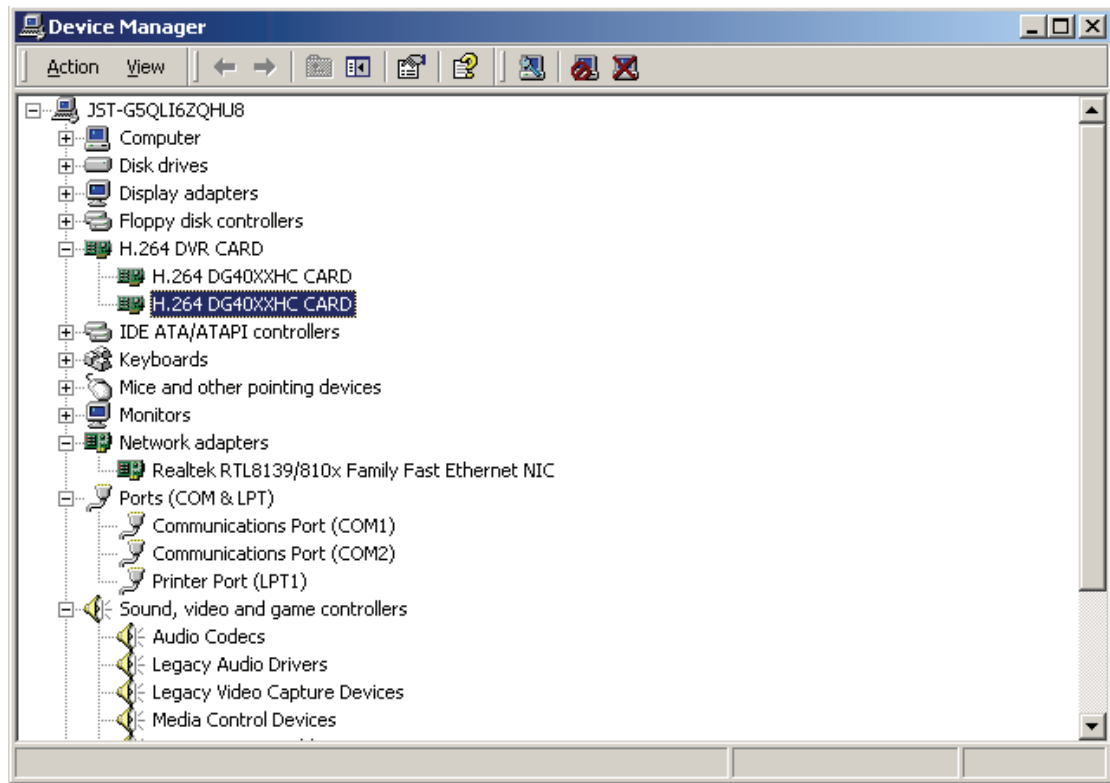


Figure 12: Check drivers

After you finished driver installation, you can run DVR program now.